



# C3A+WLB

Wire-Free Camera LTE Base Station Kit

## A Smarter Security System

The C3A battery-powered camera is your personal security guard! This totally wireless camera can be placed anywhere you need it to go. Use the C3A independently, or pair it with the versatile WLB base station with built-in 4G LTE module to significantly extend battery life and functionality.



# C3A

100% Wire-Free, Battery-Powered Camera



Built-in 5,500 mAh Rechargeable Lithium Battery



IP65 Dust and Water Protection



PIR Motion Detection



Two-Way Talk



125° Diagonal Field of View



1080p



Night Vision  
Up to 25 ft. (7.5 m)



2.4GHz



Supports MicroSD Card  
(Up to 128 GB)

# WLB

Base Station for the C3A



Prolongs Battery life of C3A



Built-in 2600mAh Rechargeable Battery



Built-in 4G LTE Module for Additional Internet Connections (Micro-SIM Card Slot)



Connects Up to Six C3A Units



Built-in 100dB Siren



Supports MicroSD Card  
(Up to 128GB)



Provides 2.4GHz & 5GHz Wi-Fi for Two Additional Personal Terminals



Ethernet Cable to Home Router

## Hassle-Free, Effortless Security

---

Enjoy the peace of mind that comes without hassle. The C3A battery-powered camera is completely 100% wire-free. Just place it where you need it and it's ready to go!



## Stands Guard Anywhere You Need It

---

Use the weather-proof C3A to monitor anywhere – whether indoors or out, rain or shine.



## Extra Protection with Accurate Detection

The C3A's passive infrared (PIR) motion detection feature sends you an instant alert with images and videos captured when a visitor approaches. Once you connect the C3A with the WLB, the WLB will even emit a 100-decibel siren when triggered, reminding you to check on what's happening.

✓ Pet Movement



✓ Human Movement



✗ Curtain Movement



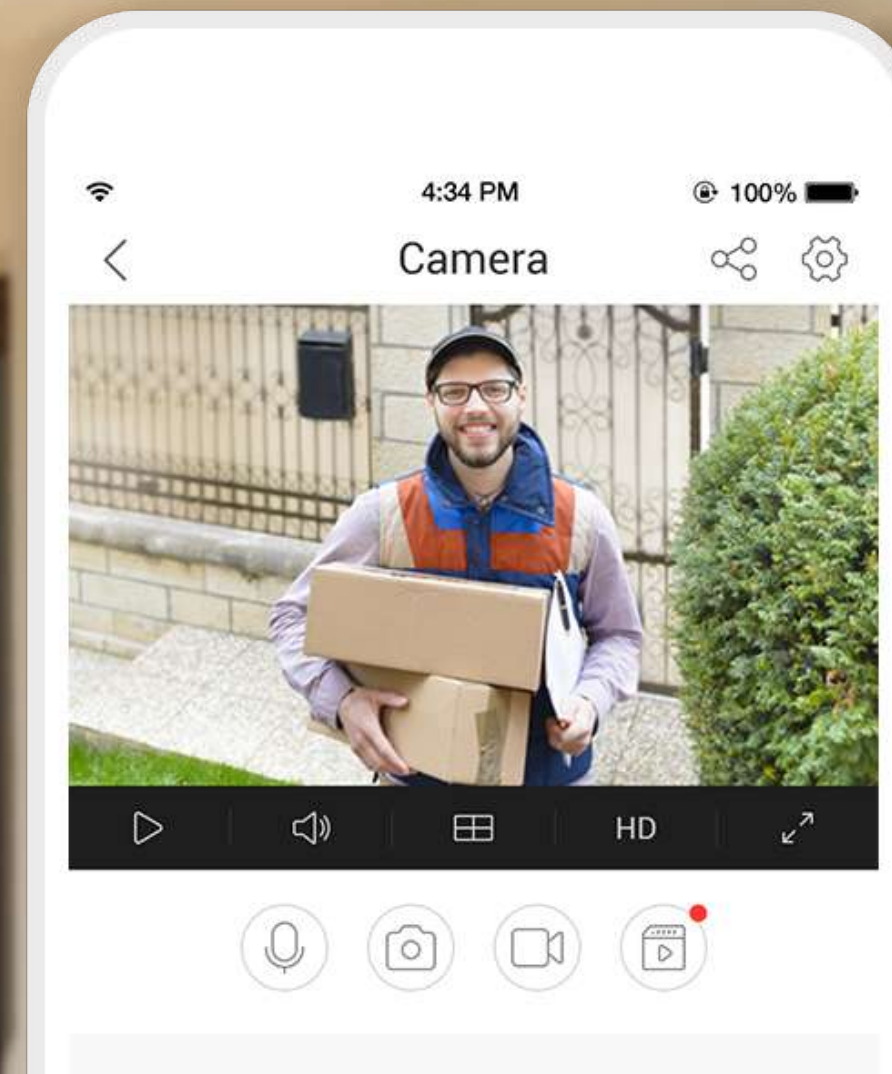
✗ Insect Movement



✗ Lighting Changes

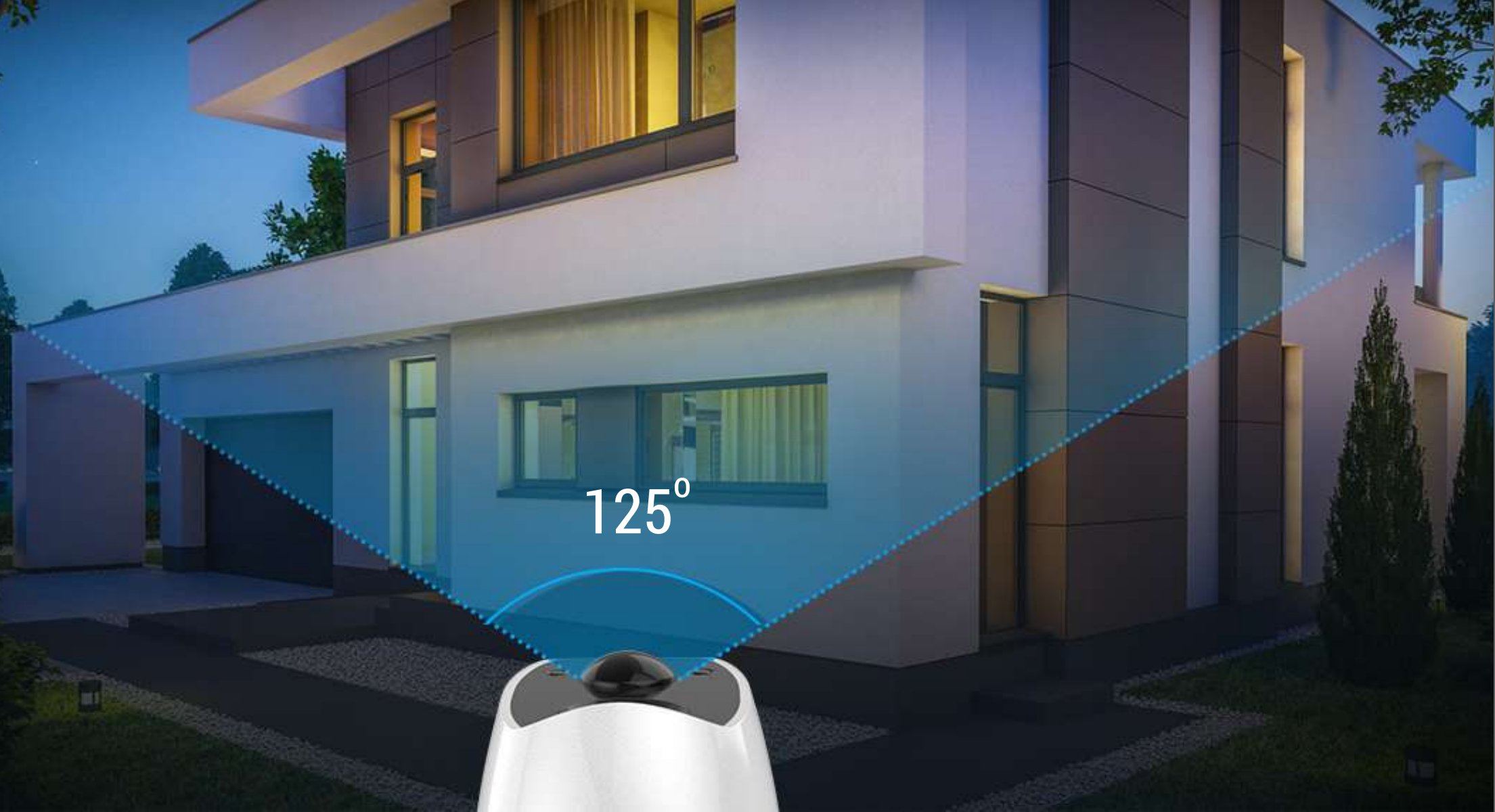
## Two-Way Talk Secures Your Home

Speak with visitors and hear what's happening anywhere and at any time using your smartphone.



## Watches Over What Matters Most, Day and Night

The C3A renders sharp images even in dimly lit areas, ensuring protection for your front porch or back yard all night long.



## A Versatile Companion

The WLB connects and manages up to six C3A units at once. It can even function as a router, providing 2.4 and 5 GHz Wi-Fi connections.



## Longer Battery Life Means Less Worry

The rechargeable battery allows the C3A to provide you with lasting protection on one charge. The battery life lasts even longer when paired with the WLB.



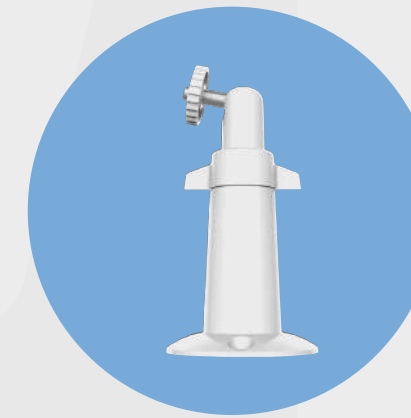
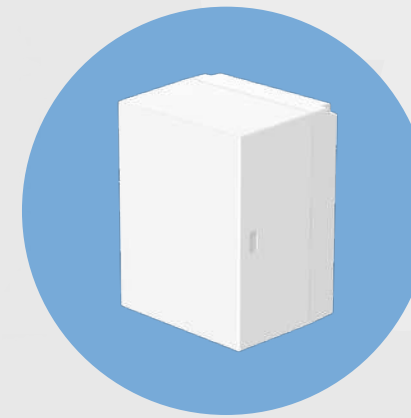
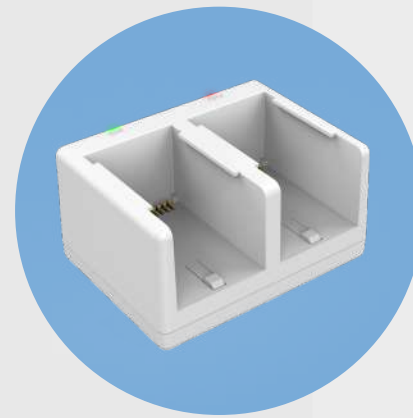
## We Have Your Back

Even when power or network connections go out, the WLB can continue operating for more than an hour thanks to its built-in rechargeable battery and 4G LTE module (Micro-SIM card sold separately), reliably providing Wi-Fi connections to the C3A.



## Comprehensive Accessories to Choose From

A wide range of accessories are also available to enhance your experience, including a charging station, rechargeable battery and mounting bracket for long-lasting protection and good usability.



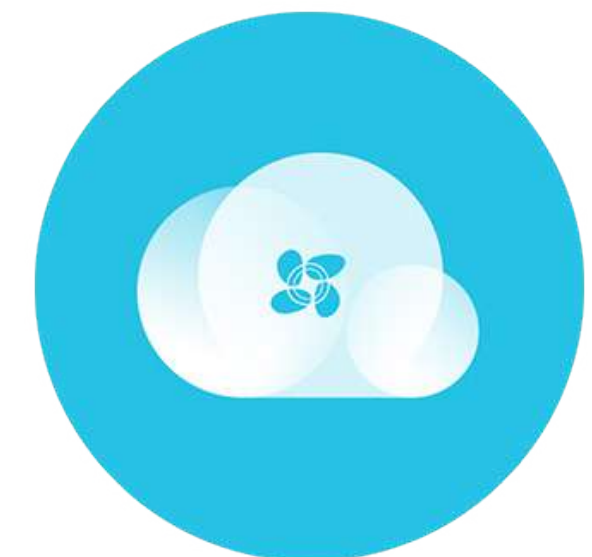
## Multiple Storage Solutions

Save your recordings with flexible and secured solutions. Both the C3A and WLB come with a built-in MicroSD card slot that can store up to 128 GB of recorded data. You can also save your images to the EZVIZ Cloud for additional back-up.

(Cloud storage service is only available in certain markets. Please verify the availability before making any purchase.)



Both the C3A and WLB Support MicroSD Card



Encrypted Cloud Storage

\*After pairing the C3A with the WLB, the recorded footage will be saved to WLB's MicroSD card by default.

# Specifications C3A Model C3A

## System Parameters

Processor	High-Performance Embedded SOC Processor
Operation System	Embedded RTOS

## Camera Parameters

Sensor	1/4" 2-Megapixel sensor
Lens	2.2mm@F2.4
Field of View	Diagonal FOV 125°
Night Vision	Up to 25ft

## Video Parameters

Compression Standard	Smart H.264
Max. Resolution	1920 × 1080, FHD
Frame Rate	Max. 15fps Adaptive frame rate of network transmission
DNR	3D DNR
WDR	DWDR
BLC	Supports

## Audio Parameters

Audio Input	Built-in omni-direction microphone
Audio Output	Built-in loudspeaker
Audio Quality	Noise suppression

## Network Parameters And Storage

Wireless	Built-in 2.4GHz Wi-Fi
Network Configuration	AP Pairing
Minimum Network Requirements	2Mbps
Local Storage	Supports microSD card (Up to 128 GB)
Cloud Storage	EZVIZ Cloud Storage

## Event

Sensor	PIR Motion Sensor
Alarm	Customized Alert Area
Siren	N/A

## General

Power Supply	5500 mAh Rechargeable Lithium Battery and 5V DC
Power Consumption	Max. 5W
Weatherproof	IP65
Product Dimensions	56.08 x 70.02 x 92.09 mm/ 2.2 x 2.76 x 3.6 inch
Packaging Dimensions	118.5 x 130 x 215 mm/ 4.67 x 5.1 x 8.46 inch
Weight	215 g/ 0.47lb



# Specifications WLB Model CS-WLB-EUP

## Network Interface

1 RJ-45 10/100Mbps Self-adaptive Ethernet WAN interface  
1 RJ-45 10/100Mbps Self-adaptive Ethernet LAN interface

## Network Connection

Wired , wireless uplink router connection or 4G direct connection

## Wireless Parameters

Wi-Fi: 2.4GHz&5GHz  
Radio Frequency: 868Mhz

## Minimum Network Requirement

10mbps. Additional personal terminals' traffic (if any) is not included

## Wireless Access Ability

Supports access 6 wire-free cameras and 2 additional terminals like mobile phone, tablet and laptop.

## Video/Audio Input

Supports access up to 6 battery cameras

## Connection Configuration

Camera: sync button on base station  
Personal Devices: Wi-Fi name and password

## 4G LTE Module

EU Frequency Band:	GSM/GPRS/EDGE:850M/ 900M/1800M/1900M
UMTS:	B1/B8
FDD-LTE:	B1/B3/B5/B7/B8/B20
UMTS: TDD-LTE:	B40

## Local Storage

One SD card slot on the base station, supports MicroSD card memory minimum 8 GB, maximum 128 GB.

Recommendation compatibility class 10 or above.

## Siren

100dB Built-in Siren

## Button

One SYNC button on the top of the base station  
One Power button on the back of the base station  
One Reset button on the back of the base station (hold 10 seconds to RESET)

## Power Supply

Input:	AC 100V–240V ~ 50/60Hz
Output:	DC 12V/1.5A

# Specifications WLB Model CS-WLB-EUP

## Battery Type

2600mAh Rechargeable Lithium Battery

## Battery Working Time

Battery Pack Capacity: 18WH

Typical Working Status Power Consumption: 9W

Typical Working time approximate 2 hours

Recharging time approximate 4 hours

## Working Temperature and Humidity

0 °C to +40 °C, 10% to 90%.

Indoor usage only.

## Dimensions & Weight

Product Dimensions: 142 x 130 x 130 mm/ 5.6 x 5.1 x 5.1inch

Packaging Dimensions of C3A+WLB Kit: 295 x 260 x 172 mm/ 11.6 x 10.2 x 6.8 inch

Net Weight: 762g (1.68 lbs)

## Package Contents:

- Camera
- Removable and Rechargeable Battery
- Magnetic Mount
- 1 Meter (3.3 ft.) USB Cable
- C3A Power Adapter
- 1.5 Meters (4.9 ft.)WLB Power Adapter
- Screw Kit
- Base Station
- 1.5 Meters (4.9 ft.)Network Cable
- Quick Start Guide

## Requirements

### **C3A**

- Operating Conditions: -4 ~113°F (-20 ~ 45°C), Humidity 95% or less

### **WLB**

- Operating Conditions: 32 ~ 104°F (0 ~ 40°C), Humidity 10% ~ 90%.  
Indoor use only.

## Certificates

### **C3A**

- CE / FCC / UL

### **WLB**

- CE

Specifications are subject to change without notice. "  ", "EZVIZ" and other EZVIZ's trademarks and logos are the properties of EZVIZ in various jurisdictions. Other brands and product names are trademarks or registered trademarks of their respective holders.

<https://www.ezvizlife.com/>